

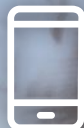
performance<sup>7</sup>  
parts  
By HUSSMANN®

# WE'RE SHELVING<sup>7</sup> THE COMPETITION

ADD CONVENIENT REPLACEMENT SHELVING TO YOUR CURRENT  
HILL PHOENIX®, KYSOR WARREN®, AND TYLER® CASES



[PARTS.HUSSMANN.COM](https://parts.hussmann.com)



855.HUSSPRT (855.487.7778)

# HUSSMANN SHELVING FOR<sup>7</sup> LEADING REFRIGERATION CASES

OUR TEAM HAS DESIGNED NEW, EASY-TO-ASSEMBLE REPLACEMENT SHELVES FOR HILL PHOENIX, KYSOR WARREN, AND TYLER CASES.

OUR COMPETITIVE PRICING allows you to save while expanding merchandising space. With responsive customer service, you will **IMPROVE THE LOOK OF YOUR CASES AND STORE** when you replace worn and damaged shelving.



## UPGRADE TO HUSSMANN<sup>7</sup> SHELVING THAT FEATURES:

- Easy cleaning, durable powder-coated painted surfaces.
- Microban® antimicrobial protection infused in the deck panpaint to protect the product from contamination.
- Lightweight, durable deck pans that support up to 250 lbs. without noticeable deflection and sagging.
- Corrosion-resistant materials designed for reliable, long-term heavy use.
- Brackets that attach to pans for easy 1-person installation.
- Compatibility with Hussmann-designed accessories.

## ACCESSORIES FOR<sup>7</sup> IMPROVED SALES:

Updating worn and damaged price tag molding, lighting and product stops will boost your product presentation and improve the look of your store to help improve your sales.

- Your kit will include standard matching powder-coat painted price tag molding (PTM).
- Additional accessory upgrade options add merchandising flexibility.
- Assembly is also available.

**DON'T WAIT! ORDER TODAY!**  
PARTS.HUSSMANN.COM/SHELVING

### HILL PHOENIX® Multi-Deck 48in. | 2 POSITION

SIZE	BLACK	WHITE
16" x 48"	RX64UA	RX65UA
18" x 48"	RX62UA	RX63UA
20" x 48"	RX59UA	RX61UA
22" x 48"	RX57UA	RX58UA
24" x 48"	RX52UA	RX56UA

### TYLER® 48in. | 2 POSITION

SIZE	BLACK	WHITE
16" x 48"	RZ15UA	RZ20UA
18" x 48"	RZ14UA	RZ19UA
20" x 48"	RZ13UA	RZ18UA
22" x 48"	RZ12UA	RZ17UA
24" x 48"	RZ11UA	RZ16UA

### KYSOR WARREN® 48in. | 2 POSITION

SIZE	BLACK	WHITE
16" x 48"	RY57UA	RY62UA
18" x 48"	RY56UA	RY61UA
20" x 48"	RY55UA	RY60UA
22" x 48"	RY54UA	RY59UA
24" x 48"	RY53UA	RY58UA

### HILL PHOENIX® Multi-Deck 2<sup>ND</sup> Design | 48in. | 2 POSITION

SIZE	BLACK	WHITE
16" x 48"	VH86UA	VH95UA
18" x 48"	VH91UA	VH97UA
20" x 48"	VH92UA	VH98UA
22" x 48"	VH93UA	VH99UA
24" x 48"	VH94UA	V100UA

\*Select these kits when replacing Hill Phoenix shelves with brackets with hooks that point upwards.

### HILL PHOENIX® Reach-In 30in. | 200LB. CAPACITY

#### TWO POSITION

1.5" PTM  
22" x 30"  
24" x 30"

#### BLACK

BLACK  
VQ09AB  
VQ10AB

#### WHITE

WHITE ANODIZED  
VQ47AW VQ47AA  
VQ48AW VQ48AA

### WIRE FENCE PRODUCTS STOPS

48in. WIDE

HEIGHT	BLACK	WHITE
2.5"	0360259*	0101895
3"	0529725*	0529724
4"	0364012	0101896

### WIRE FENCE PRODUCTS STOPS

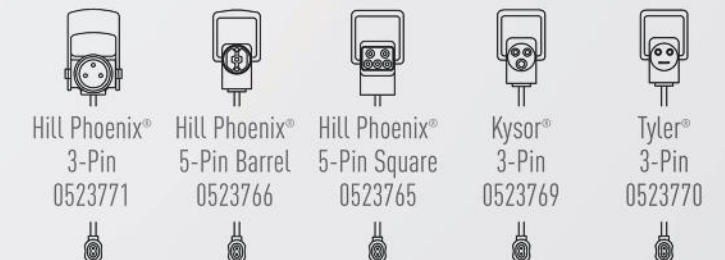
48in. WIDE

HEIGHT	CLEAR ACRYLIC
1"	A1840
2"	A1850*
2.5"	FZ130
3"	AX450*
4"	AQ57M*

### STANDARD SHELF LIGHT

48in. | LED

ECOSHINE II	LED COLOR		
	3000k	3500k	4000k
WITH MAGNETS ONLY	KLI020	KLI030*	KLI040*





# HUSSMANN PROMISE

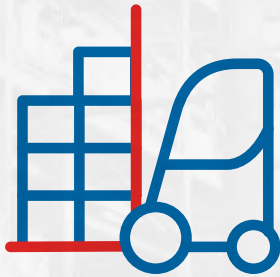
CONTINUOUSLY PROVIDING THE MOST CUSTOMER-FOCUSED SOLUTIONS IN THE FOOD RETAILING INDUSTRY



parts e-store  
By **HUSSMANN**<sup>®</sup>

[PARTS.HUSSMANN.COM](http://PARTS.HUSSMANN.COM)

ORDER THE PARTS YOU NEED. ANYTIME, ANYWHERE.



performance parts  
By **HUSSMANN**<sup>®</sup>

The Performance Parts Distribution Center is centrally located near **ST. LOUIS, MISSOURI**, providing efficient shipping to all locations across the United States.

The Performance Parts Canadian Distribution Center is located in **CAMBRIDGE, ONTARIO** for expedited shipping in Canada.

**BETTER BUSINESSES · BETTER PARTNERS · BETTER WORLD**

## CONTACT US

### CUSTOMER SUPPORT

855.HUSSPRT (855.487.778)

MONDAY - FRIDAY

7AM - 6PM  
CST



### EMAIL ORDER ENTRY

[AMPARTS@HUSSMANN.COM](mailto:AMPARTS@HUSSMANN.COM)

MONDAY - FRIDAY

8AM - 5PM  
CST

**HUSSMANN**<sup>®</sup>



PRINTED IN U.S.A - [PARTS.HUSSMANN.COM](http://PARTS.HUSSMANN.COM) - ©2019 HUSSMANN CORPORATION